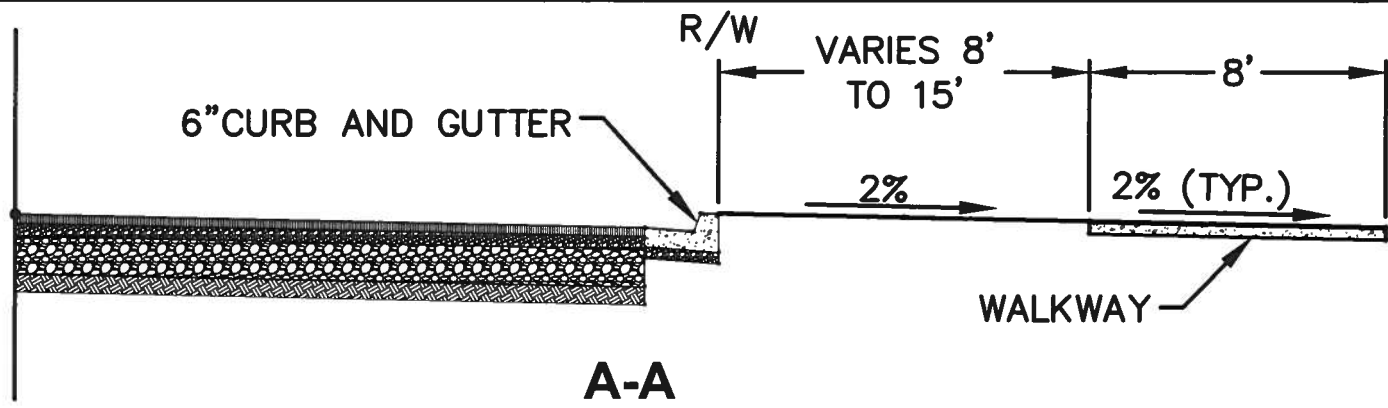
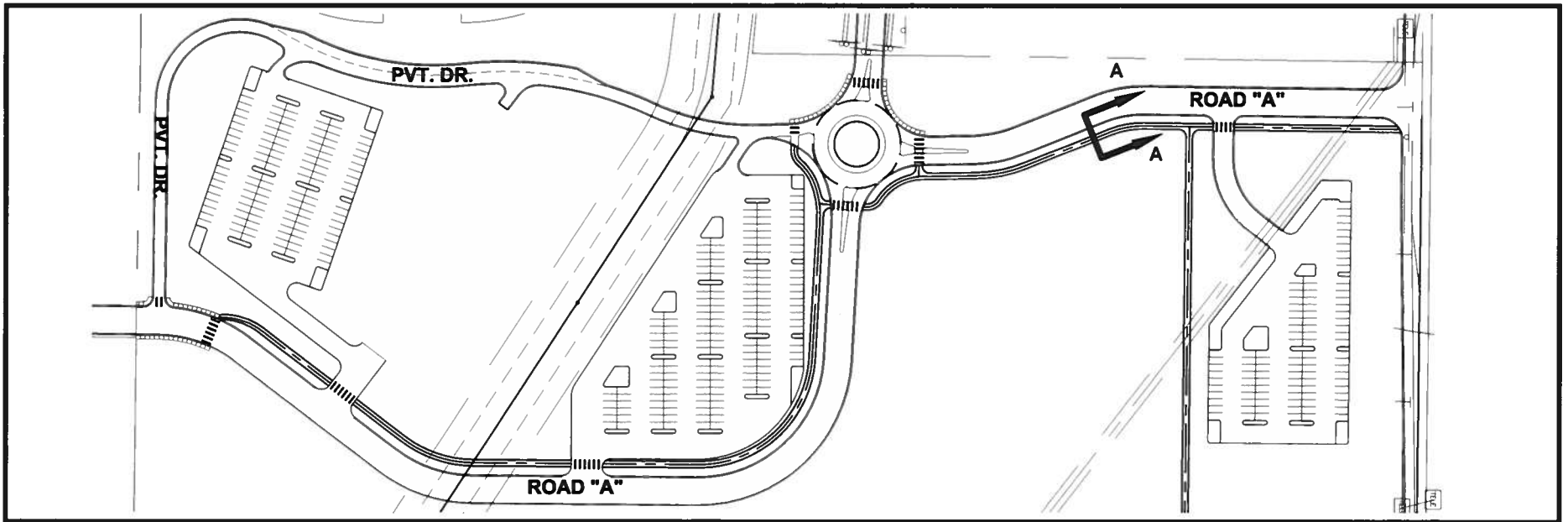


**CITY OF EAGLE
WEST PARK**



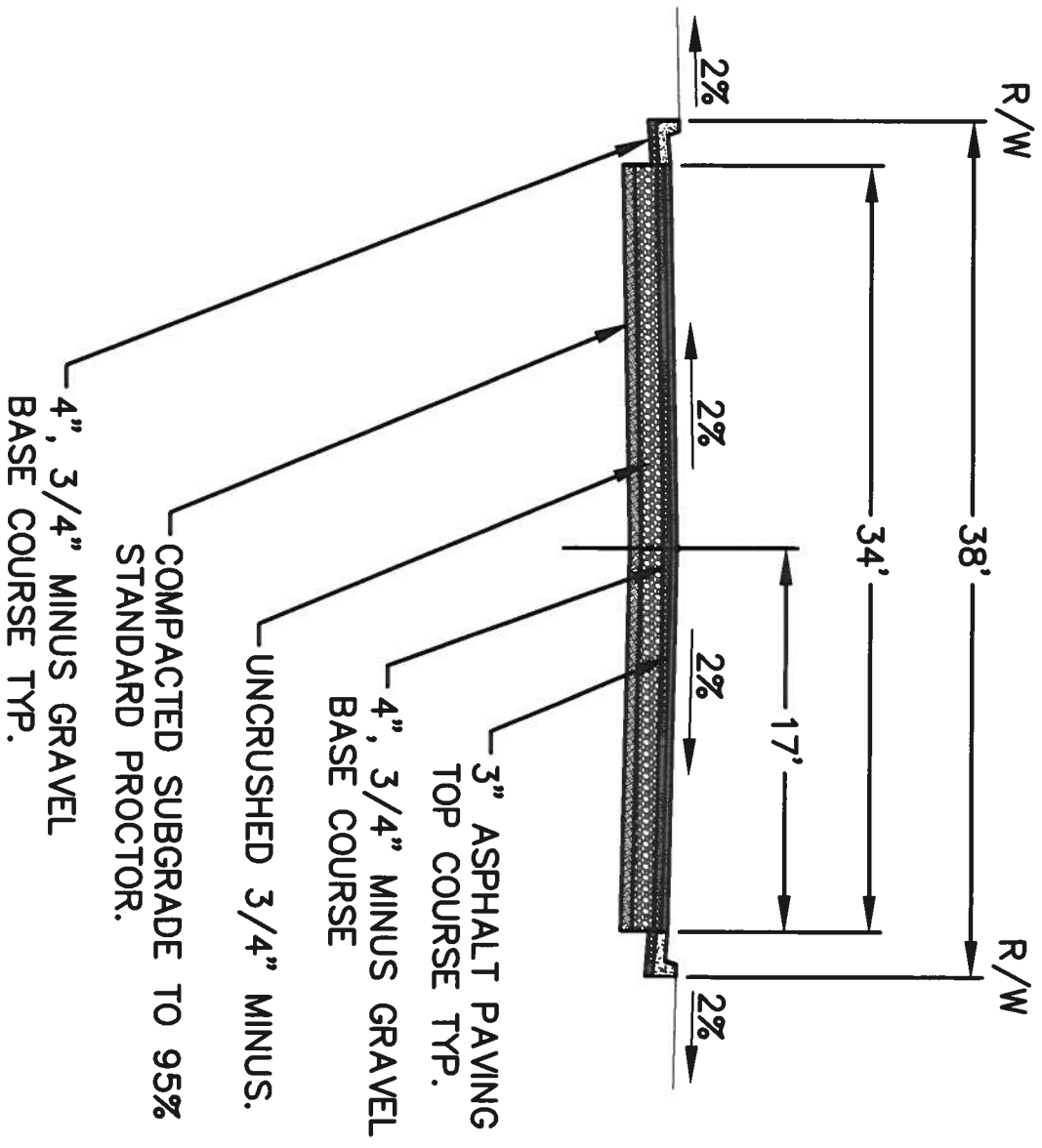
32 N Main Street • PO Box 235 • Payette, ID 83661
 1079 S Ancona Ave, Suite 140 • Eagle, ID 83616
 208.642.3304 • info@hecoengineers.com

WEST EAGLE PARK
 TRAIL DETAIL

DRAWN BY: M PATZER

DRAWING DATE: JUN 19

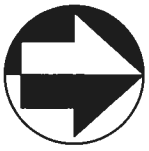
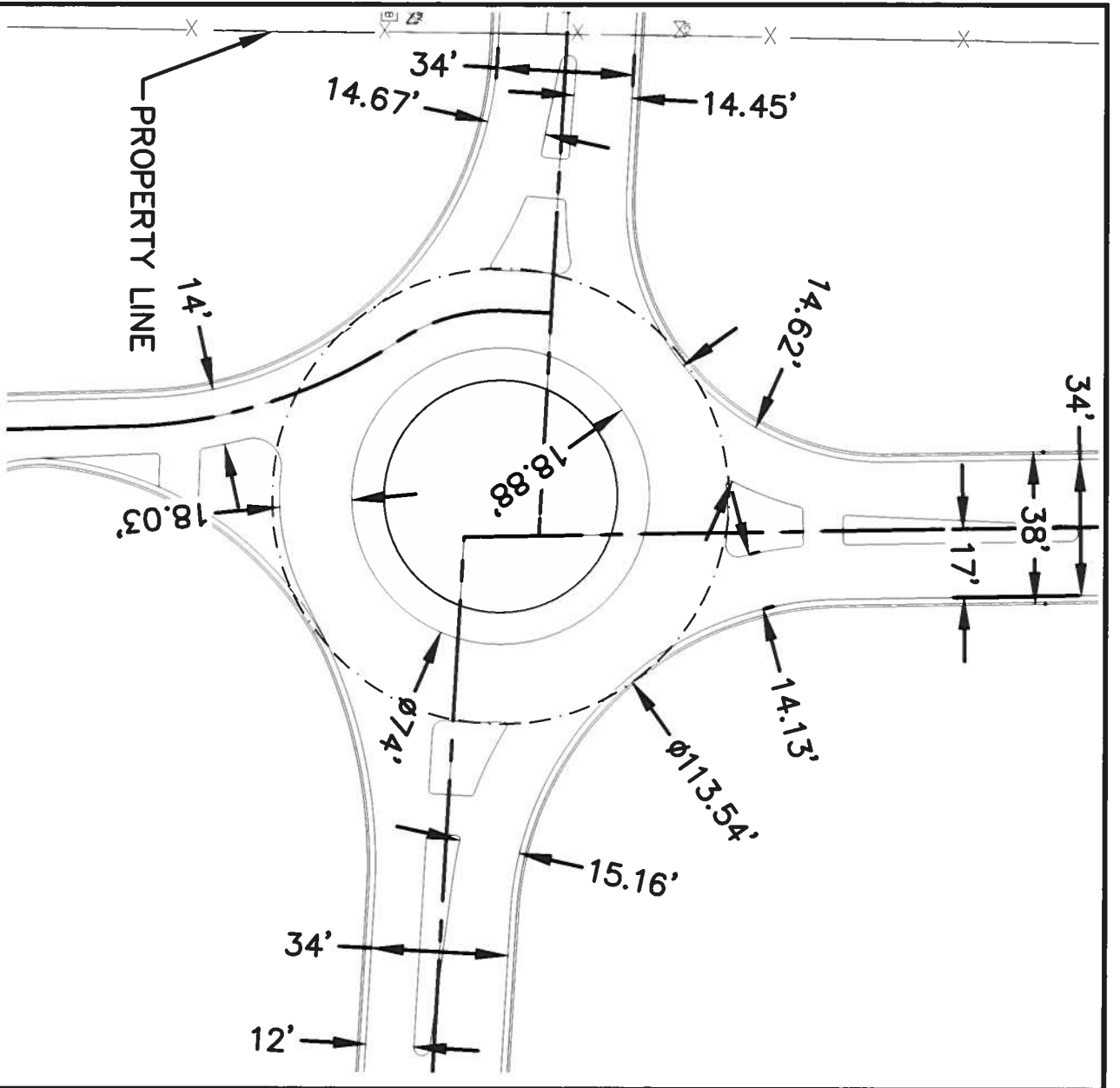
FILE LOCATION: G:\CLIENTS\EG\EG18-03328\FIGURES-EXHIBITS\ROADWAY CROSS SECTION 8.5X11.DWG



32 N Main Street • PO Box 235 • Payette, ID 83861
 1079 S Anderson Ave, Suite 140 • Eagle, ID 83616
 208.842.2304 • info@hcecoengineers.com

WEST EAGLE PARK
ROADWAY CROSS SECTION
ROAD "A"

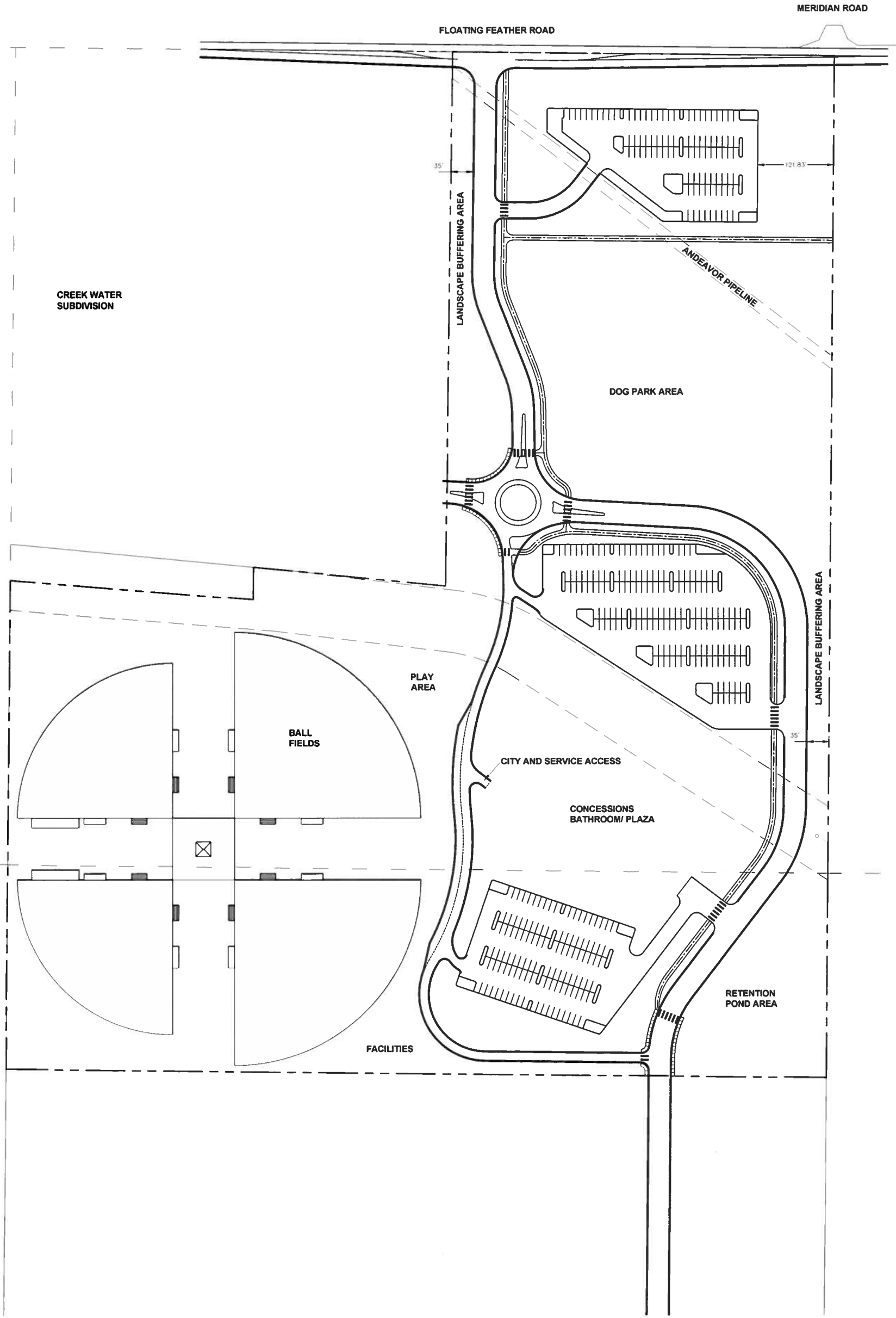
DRAWN BY: HECO CAD DEPARTMENT | DRAWING DATE: JULY 19
 FILE LOCATION: c:\ADMIN\EGVEG18-03328\FIGURES-EXHIBITS\ROADWAY CROSS SECTION 8.SX11.DWG



32 N Main Street • PO Box 235 • Payette, ID 83961
 1079 S Anconia Ave, Suite 140 • Eagle, ID 83616
 208 842-3304 • info@hecoengineers.com

WEST EAGLE PARK
ROUND-A-BOUT DETAIL

DRAWN BY: HECO CAD DEPARTMENT | DRAWING DATE: JULY 19
 FILE LOCATION: c:\ALLEN\T\EGVE08-0328\FIGURES-EXHIBITS\ROADWAY CROSS SECTION 8.SX11.DWG



**CITY OF EAGLE
WEST PARK**